

DELUXE

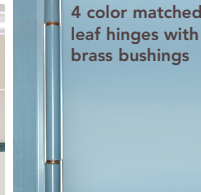
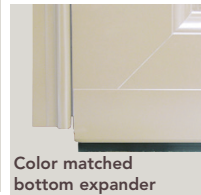
Series Storm Doors



Deluxe Series is the answer whether you're looking for additional light, ventilation or protection from the elements. You'll find the exact style you're looking for, in our Deluxe Series of storm doors.

Deluxe Series Storm Doors Standard Features Include:

- Double seal bottom sweep
- 1 1/4" x 3 3/8" wide sculptured frame
- BetterVue™ fiberglass screen
- Tempered safety glass.



\$996
Custom Size: \$1,218
#385 Full View
Double Prairie with
Beveled Glass
Includes screen*



\$948
Custom Size: \$1,170
#382 Full View with
Beveled Glass
Includes screen*



\$691
Custom Size: \$779
#397 Full View
Includes screen*



\$692
Custom Size: \$770
#391 Full View
Divided Lite
Includes top
screen



\$767
Custom Size: \$855
#396-V One-Lite with
fixed .023 gauge
stainless steel screen
ventilated bottom
& removable sash.
Includes top screen*



\$691
Custom Size: \$779
#396 One-Lite
Includes screen*



\$712
Custom Size: \$800
#399 Self-Storing
Includes full screen*



\$692
Custom Size: \$780
#398 Hi-Lite
Includes top
screen



\$712
Custom Size: \$800
#389 Self-Storing
Includes full screen*



\$792
Custom Size: \$879
#392 Provincial
Self-Storing
Includes full screen*



\$794
Custom Size: \$881
#394 Provincial
Includes screen



\$792
Custom Size: \$879
#393 Crossbuck
Self-Storing
Includes full screen*



\$794
Custom Size: \$881
#395 Crossbuck
Includes screen



\$790
Custom Size: \$878
#379 Self-Storing
Includes full
screen*



\$790
Custom Size: \$878
#374 Flush Half-Lite
Includes screen



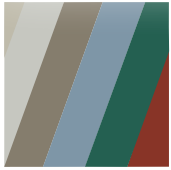
\$985
Custom Size: \$1,238
#397-VIN Vintage
(Timberland)**

INSPIRATIONS[™]
art glass

* Full and One-Lite screens have horizontal stabilizer bar.

** Ask to see our Inspirations Art Glass brochure for our complete selection of designs, color palettes, and style availability.

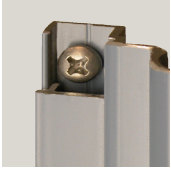
Storm Door Construction



Durable, oven-baked polyester finishes are backed by a Lifetime Warranty for lasting beauty and low maintenance.



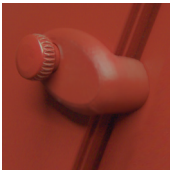
Extruded aluminum frame adds beauty to your door by virtue of the rounded **cove molding along the glass edge** of the extrusion.



You'll appreciate the finished look of our **color matched aluminum installation screw covers**.



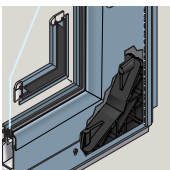
Each door features **quality hardware** that adds beauty and functionality to your new storm door.



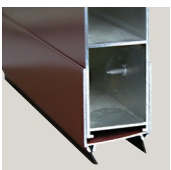
Sashes are secured by our **color matched polycarbonate clips**.



Smooth function is essential. That's why we include a **quality door closer** in every storm door package.



Corrosion proof corner gussets enhance the structural integrity of the door.



Color matched bottom expander with sweep allows for adjustment to ensure a snug fit as needed.



www.universalwindowsdirect.com

1.800.984.5846

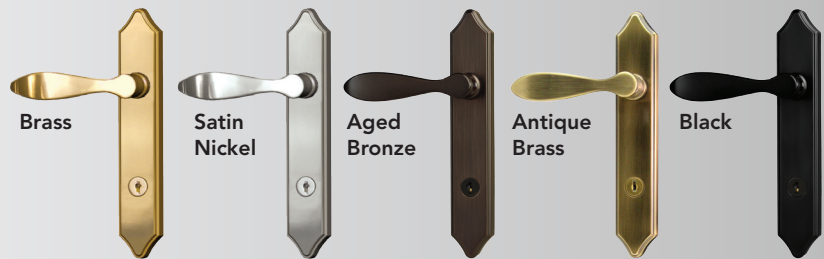
440.786.1400

7813 First Place • Oakwood Village, OH 44146

Accessories & Upgrades

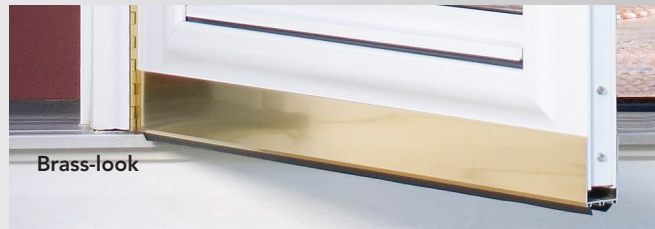
Hardware Upgrade

Windsor hardware with deadbolt upgrade: \$50*



* Black Windsor handle upgrade is N/C

Piano Hinge and Bottom Expander



Brass-look, Satin Nickel, or Aged Bronze Piano Hinge upgrade:\$82

Brass-look, Satin Nickel, or Aged Bronze Bottom Expander upgrade:\$17



Easy-Set Closer



Just a slight push on the cap and it'll stay open. Push door open further and it releases. Color matched to door.

Easy-Set upgrade: \$14

Storm Door Paint Colors

To select paint color, refer to our color selector for accurate color representation.

Snow Mist	Café Cream	Chateau	Sandpiper Beige	Sandstone
Sterling Gray	Clay	Geneva Blue	Forest Green	Mountain Berry
Rustic Bronze	Tudor Brown	Coal Black		

Limited Colors

Available on entry doors and storm doors.

Matching cladding and caulking not available.

Primrose Yellow	Enzian Blue	Vallis Red
-----------------	-------------	------------