

# DELUXE

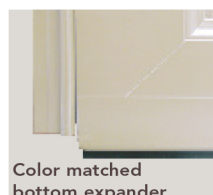
## Series Storm Doors



*Deluxe Series is the answer whether you're looking for additional light, ventilation or protection from the elements. You'll find the exact style you're looking for, in our Deluxe Series of storm doors.*

### Deluxe Series Storm Doors Standard Features Include:

- Double seal bottom sweep
- 1¼" x 3⅝" wide sculptured frame
- BetterVue™ fiberglass screen
- Tempered safety glass.



**#385 Full View**  
Double Prairie with Beveled Glass  
Includes screen\*



**#382 Full View** with Beveled Glass  
Includes screen\*



**#397 Full View**  
Includes screen\*



**#391 Full View**  
Divided Lite  
Includes top screen



**#396-V One-Lite** with fixed .023 gauge stainless steel screen ventilated bottom & removable sash.  
Includes top screen\*



**#396 One-Lite**  
Includes screen\*



**#399 Self-Storing**  
Includes full screen\*



**#398 Hi-Lite**  
Includes top screen

INSPIRATIONS<sup>®</sup>  
art glass



**#389 Self-Storing**  
Includes full screen\*



**#392 Provincial Self-Storing**  
Includes full screen\*



**#394 Provincial**  
Includes screen



**#393 Crossbuck Self-Storing**  
Includes full screen\*



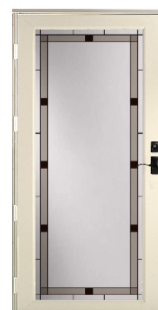
**#395 Crossbuck**  
Includes screen



**#379 Self-Storing**  
Includes full screen\*



**#374 Flush Half-Lite**  
Includes screen

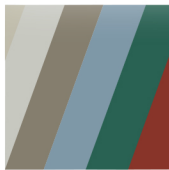


**#397-VIN Vintage**  
(Timberland)\*\*

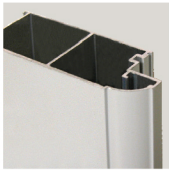
\* Full and One-Lite screens have horizontal stabilizer bar.

\*\* Ask to see our Inspirations Art Glass brochure for our complete selection of designs, color palettes, and style availability.

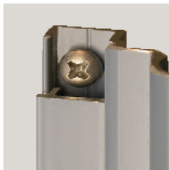
## Storm Door Construction



**Durable, oven-baked polyester finishes** are backed by a Lifetime Warranty for lasting beauty and low maintenance.



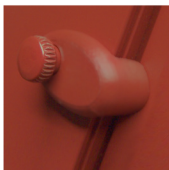
**Extruded aluminum frame** adds beauty to your door by virtue of the rounded **cove molding along the glass edge** of the extrusion.



You'll appreciate the finished look of our **color matched aluminum installation screw covers**.



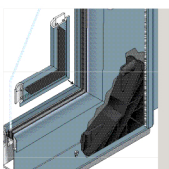
Each door features **quality hardware** that adds beauty and functionality to your new storm door.



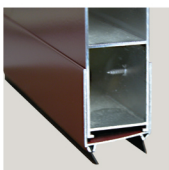
Sashes are secured by our **color matched polycarbonate clips**.



Smooth function is essential. That's why we include a **quality door closer** in every storm door package.



**Corrosion proof corner gussets** enhance the structural integrity of the door.



**Color matched bottom expander with sweep** allows for adjustment to ensure a snug fit as needed.



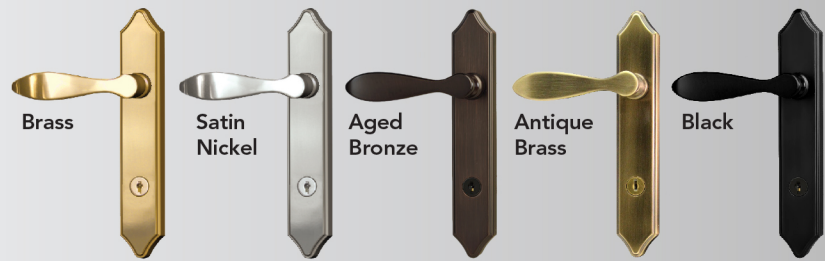
[www.universalwindowsdirect.com](http://www.universalwindowsdirect.com)

**1.800.984.5846**

## Accessories & Upgrades

### Hardware Upgrade

Windsor hardware with deadbolt upgrade:



\* Black Windsor handle upgrade is N/C

### Piano Hinge and Bottom Expander



**Brass-look, Satin Nickel, or Aged Bronze Piano Hinge upgrade:**

**Brass-look, Satin Nickel, or Aged Bronze Bottom Expander upgrade:**



### Easy-Set Closer



Just a slight push on the cap and it'll stay open. Push door open further and it releases. Color matched to door.

**Easy-Set upgrade:**

### Storm Door Paint Colors

To select paint color, refer to our color selector for accurate color representation.

Snow Mist	Café Cream	Chateau	Sandpiper Beige	Sandstone
Sterling Gray	Clay	Geneva Blue	Forest Green	Mountain Berry
Rustic Bronze	Tudor Brown	Coal Black		

### Limited Colors

Available on entry doors and storm doors.

Matching cladding and caulking not available.

Primrose Yellow	Enzian Blue	Vallis Red
-----------------	-------------	------------